



GigaJet Pro

DMX-Ethernet node with fibre optic link and gigabit switch

Multifunctional rack mounted bidirectional converter, splitter, booster, intelligent merger transmitting DMX/ArtNet/sACN/KiNet/RTTrPL streams in Gigabit Ethernet (10/100/1000 Base-T) and fibre optic networks.

Fibre optic increases maximum length of direct connection between devices up to 2000 meters (using multimode SFP modules), or up to 10 km (using single mode SFP modules). The device also acts as 5-port Ethernet switch working in 10/100/1000BASE-TX networks.

Advantages

- 8 DMX512 ports (XLR 5-pin, 2 paired)
- Integrated fibre optic port (SFP module)
- Gigabit network switch
- 5 Ethernet ports (EtherCON)
- PoE support
- Maximum surge protection – power supply optimized for voltage from 90 to 315 V
- Simple user-friendly web interface
- Configurable DMX port direction and parameters
- Supported network protocols: ArtNet I,II,III,4, sACN draft/release, KiNet v1,v2, RTTrPL
- Full RDM E1.20 support (controller/responder)
- Static scenes (presets) stored in non-volatile memory
- Ability to work as standalone splitter/merger
- Fastest recovery after short power failure
- PowerCON TRUE1 inlet+outlet combination
- Trigger inputs for external events and alarms
- DHCP support
- IP address conflict detection

Merging Options

- HTP: highest takes precedence
- LTP: latest takes precedence
- AUTO: last modified takes precedence - intelligent merging mode
- BACKUP: primary/secondary universe backup
- PRIORITY: for sACN streams with priority tag
- TRIGGER and X-FADE: dedicated channel / dedicated universe controllable merging



Gigabit Ethernet switch



Power over Ethernet



2 IP addresses per Device



User-Friendly Web Interface



Supports RDM



Natural Heat Convection



UltraStart



Galvanic Isolated Ports



Back-Up Transmitter



Trigger Input

Application

Convert DMX512 into ArtNet and sACN protocols in both directions to transmit DMX data through Ethernet LAN and optical link for long distances up to 10,000 metres between transmitter and receiver

Working with lighting installations when distance between FOH console and stage exceeds 100 metres

Transmit more DMX streams with less cables

Gigabit network switch

Lighting control and management through single network (Ethernet + fibre)

Convert mapped video content from mapping software into DMX streams

Provide interfacing between modern stage lighting software and DMX lighting

Real-time control of video projectors and laser units supporting ArtNet or sACN from DMX console

GigaJet Pro

DMX-Ethernet node with fibre optic link and gigabit switch

Version: 1.2
12 Aug 2019

Technical Specifications

Mechanical

Housing: Solid case
Material: Metal
Dimensions, mm: 482(D) x 44(H) x 110(W)
Mass: 1.2 kg
Mounting: Rack 1 unit

Power & Electrical

Input Voltage: ~100-277 VAC, 50/60 Hz;
PoE 802.3af mode A, B
Input Power (max): 5W
Mains Fuse: 0.5 A

Environmental

Operating Temperature: 0...+60°C
Storage Temperature: -50...+70°C
Operating Relative Humidity (max): 95%
IP Rating: IP 20
Certification: CE, RoHS
Warranty: 36 Month(Return to base)

Control / Data Connections

Supported protocols: DMX512, RDM, ArtNet I, II, III, IV, sACN draft, release, KiNet v1, v2, RTTrPL
Data refresh rate: 44 Hz

Inputs / Outputs

DMX connectors: 2x XLR (M), 8x XLR (F) (5-pin)
Ethernet ports: 5x RJ-45/ EtherCON
Networks: 10/100/1000 Base-TX
Fibre Optic connectors: SFP module
Trigger inputs: 2

Configuration / Indication

Setup: Web interface, software
Indication: LEDs for DMX, Ethernet and SFP activity

Package Contents

GigaJet Pro
Power cable
Screw terminals for trigger inputs

Product Line

Name	Modification	Product code
GigaJet Pro	8 DMX inputs/outputs(5-pin), 5 Ethernet port, 1 SFP port, triggers port	GJP-5-8D5EF



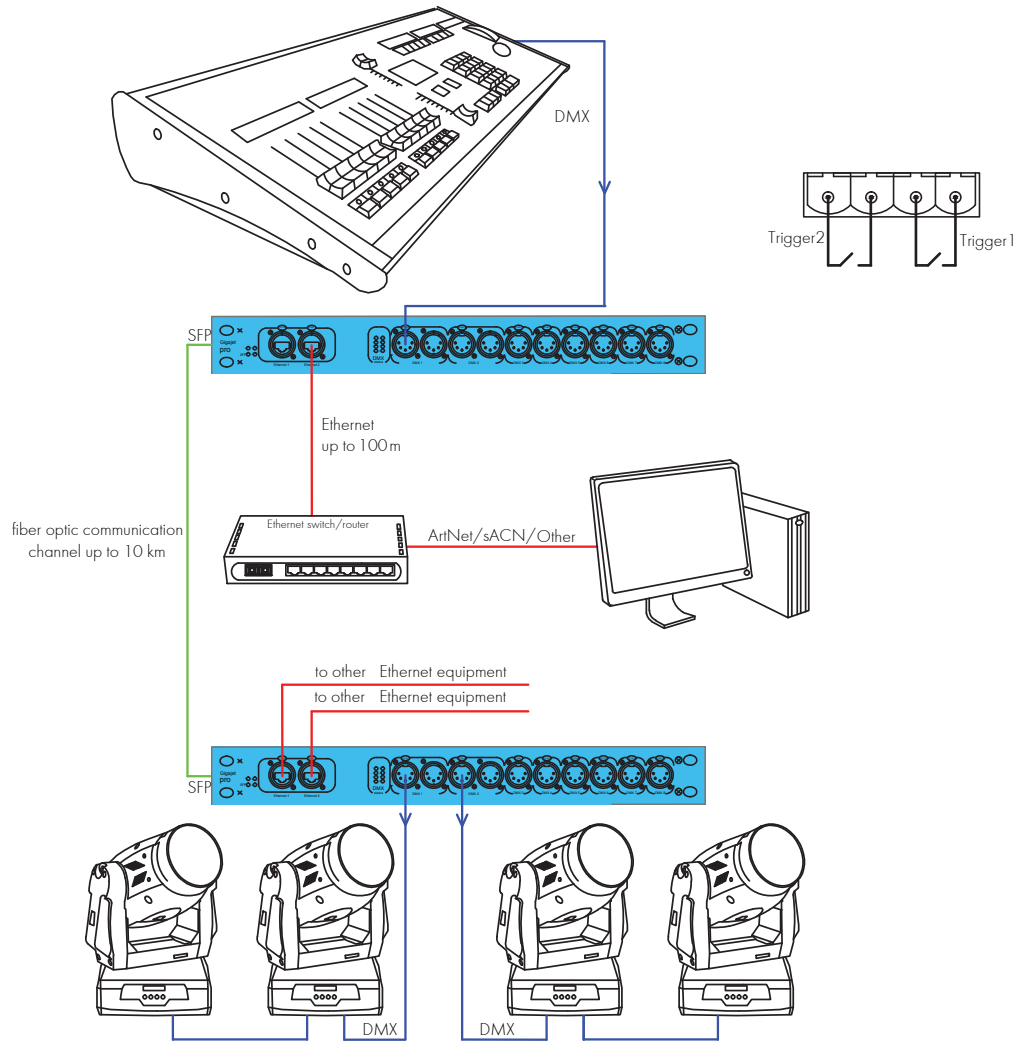
+ 44 (0) 208 991 33 19
office@sundrax.com
www.sundrax.com

GigaJet Pro

DMX-Ethernet node with fibre optic link and gigabit switch

Version: 1.2
12 Aug 2019

Connection Scheme



Disclaimer

To the best of our knowledge, the technical data contained herein is true and accurate at the date of issuance and is subject to change without prior notice. No liability accepted for errors or omissions. Always make sure to use the most recent release and contact Sundrax Electronics to verify correctness before placing your order.

Accessories

Name

- Truss mounting kit (PRO)
- SFP module 1Gbit single mode
- SFP module 1Gbit multimode
- PowerCON True1 M/F cable for extra equipment connection

Product code

- DMX-MCA-1-TMK
- DMX-ACC-1-SFP
- DMX-ACC-2-SFP
- DMX-ACC-PC-CAB



+ 44 (0) 208 991 33 19
office@sundrax.com
www.sundrax.com